



Prisoners · Families · Communities  
A Fresh Start Together

Ixion 

# Ixion Warwickshire and West Mercia Criminal Justice Conference

19<sup>th</sup> October 2015



Anglia Ruskin  
University

1

Cambridge Chelmsford Peterborough

## NOMS CFO 3 Programme

- ▶ March 2015- Contract award
- ▶ April – June 2015 – Mobilisation
- ▶ July 2015 – Go live
- ▶ December 2020 – End of programme

	Enrolments	Supportive Measures	Short Courses	Vocational / Educational Training	Gaining a qualification	Secured Employment
<b>South East</b>	<b>9,607</b>	<b>4,360</b>	<b>1,921</b>	<b>1,441</b>	<b>480</b>	<b>769</b>
<b>West Midlands</b>	<b>8,027</b>	<b>3,765</b>	<b>1,805</b>	<b>1,429</b>	<b>476</b>	<b>642</b>
Staffordshire & Shropshire	5,133	2,329	1,026	770	257	450
16-18 (Werrington)	500	350	300	300	100	0

## The South East

### Specialist Projects

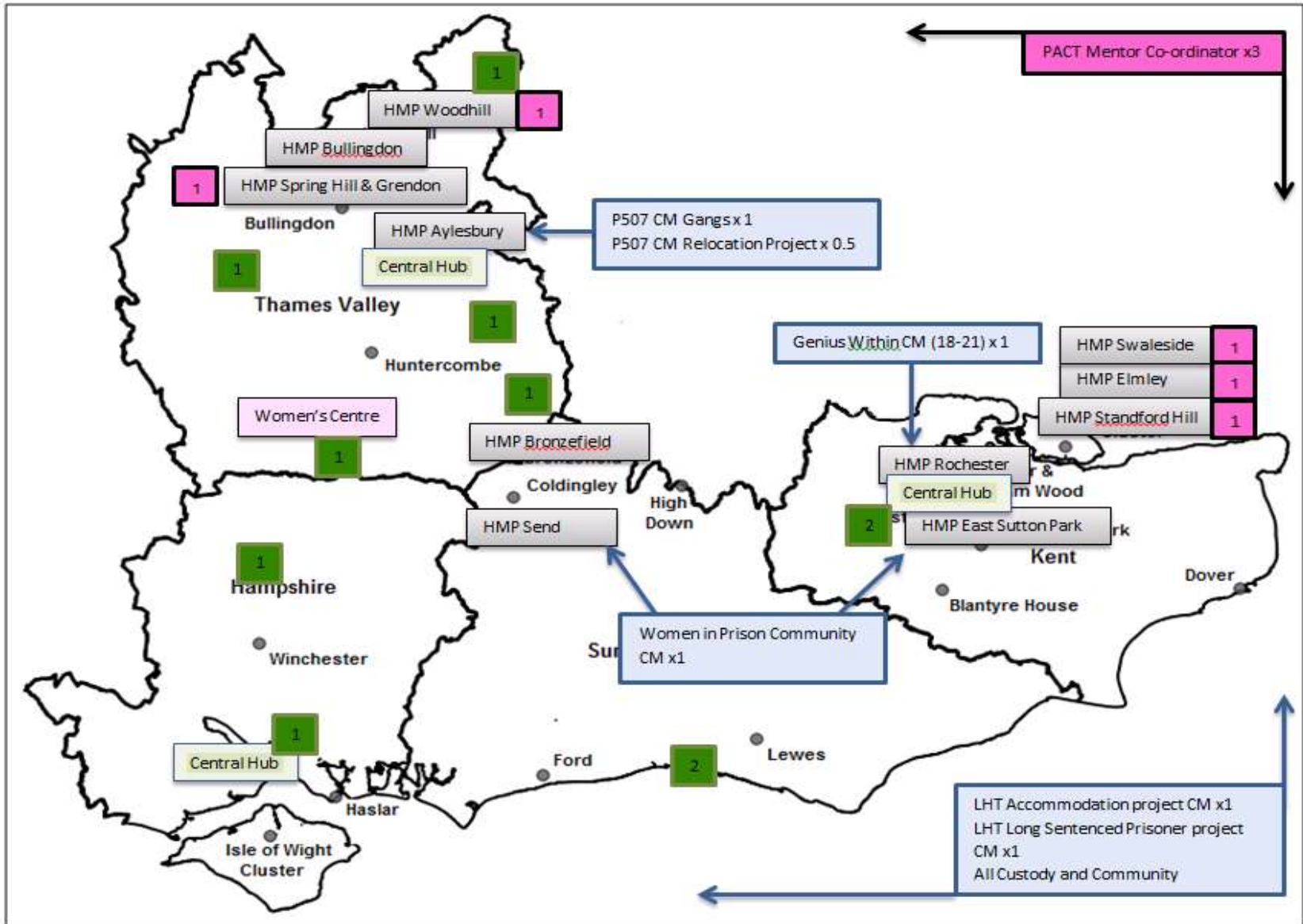
- ▶ Vulnerable Women Offenders - Women In Prison
- ▶ Long sentence reintegration - Langley House Trust
- ▶ Young Offenders 18-21 - Genius Within CIC
- ▶ Involved in Gang Activity - Project 507
- ▶ Offenders required to relocate on release - Project 507

### Additional Target Group Focus

- ▶ Personality Disorders - Langley House Trust

## Spot Purchase Arrangement Specialist Partners - South East

- ▶ Spark Inside
- ▶ Sova
- ▶ Royal Association for Deaf People
- ▶ Beyond Youth CIC
- ▶ PRIME
- ▶ Regular Forces Employment Association
- ▶ National Autistic Society
- ▶ Leap Confronting Conflict
- ▶ Trailblazers Mentoring Ltd
- ▶ Directions Project
- ▶ Refuge
- ▶ National Youth Agency
- ▶ Prince's Trust
- ▶ BITC
- ▶ Brighton and Hove Muslim Women's Group
- ▶ PRENO (Portsmouth Race Equality Network Organisation)
- ▶ Surrey Adult and Community Learning
- ▶ Mid Kent College
- ▶ Brighton Women's Centre
- ▶ Clean Break
- ▶ Women's Aid



PACT Case Manager:

Ixion Community Case Manager:

Genius Within/ Women in Prison / P507 / Langley House Trust (LHT) Case Managers:

# South East Local Arrangements

## Thames Valley CRC\*

- ▶ Milton Keynes
- ▶ Slough
- ▶ Reading
- ▶ High Wycombe
- ▶ Oxford

## Hampshire & Isle of Wight CRC\*

- ▶ Portsmouth and Southampton
- ▶ Basingstoke

## Kent, Surrey & Sussex CRC\*

- ▶ Maidstone
- ▶ Brighton

## Prisons

- ▶ Elmley - Pact Case Manager
- ▶ Spring Hill & Grendon - Pact Case Manager
- ▶ Stanford Hill - Pact Case Manager
- ▶ Swaleside - Pact Case Manager
- ▶ Woodhill - Pact Case Manager
- ▶ Bullingdon - Pact Case Manager
- ▶ Aylesbury - Pact Case Manager
- ▶ Rochester - Pact Case Manager
- ▶ East Sutton Park - Women in Prison
- ▶ Send - Women in Prison
- ▶ Bronzefield - Ixion Case Manager

Note\* : Ixion Community Case Manager (1FTE as a minimum) in each location

## Specialist Projects

- ▶ Short Sentenced prisoners - SOVA
- ▶ Gambling/ Debt Issues - Langley House Trust
- ▶ Offenders been through Care System - SOVA
- ▶ Limited family ties/support networks - Pact
- ▶ 16-18 year olds (Young People) - SOVA

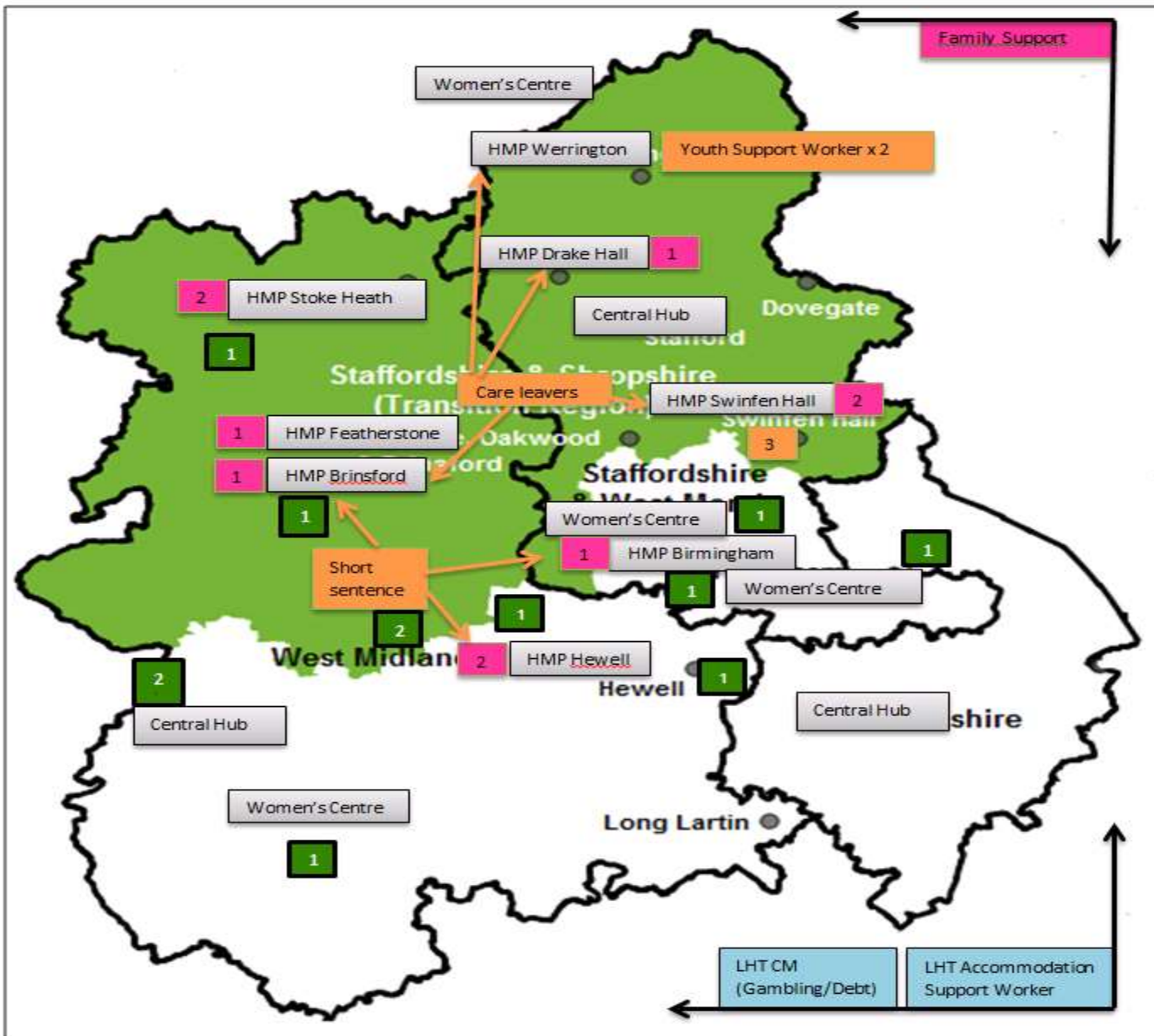
## Additional Target Group Focus

- ▶ Female Offenders
- ▶ Disability & Health conditions
- ▶ Over 50's
- ▶ BaME
- ▶ Young People Families
- ▶ Sex Offenders
- ▶ Accommodation

## Spot Purchase Arrangement Specialist Partners - West Midlands

- ▶ YSS Ltd
- ▶ Birmingham Voluntary Service Council
- ▶ Project 507 Limited
- ▶ Genius Within CIC
- ▶ Royal Association for Deaf people (RAD)
- ▶ Beyond Youth CIC (Community Interest Company)
- ▶ Regular Forces Employment Association (RFEA)
- ▶ PRIME
- ▶ National Autistic Society
- ▶ A Way Forward Foundation
- ▶ Leap Confronting Conflict
- ▶ Trailblazers Mentoring Ltd
- ▶ LATA
- ▶ Archway Academy
- ▶ Intraining
- ▶ Rathbone Training
- ▶ NOVA Training
- ▶ CAB
- ▶ 6 Towns Credit Union
- ▶ CRI
- ▶ YMCA
- ▶ Fry Housing
- ▶ Action for Children
- ▶ University of Worcester
- ▶ Worcester College
- ▶ Sandycroft
- ▶ ASHA
- ▶ Willowdene Farm
- ▶ St Basils
- ▶ Stonham
- ▶ Rapt





- Pact Case Managers
- Ixion Community Case Managers
- SOVA Case Managers

# West Midlands Local Arrangements

## Staffordshire & West Midlands CRC\*

- ▶ Stoke on Trent
- ▶ Wolverhampton / West Bromwich/  
Walsall/ Dudley
- ▶ Stafford
- ▶ Birmingham
- ▶ Coventry
- ▶ Tamworth/ Solihull

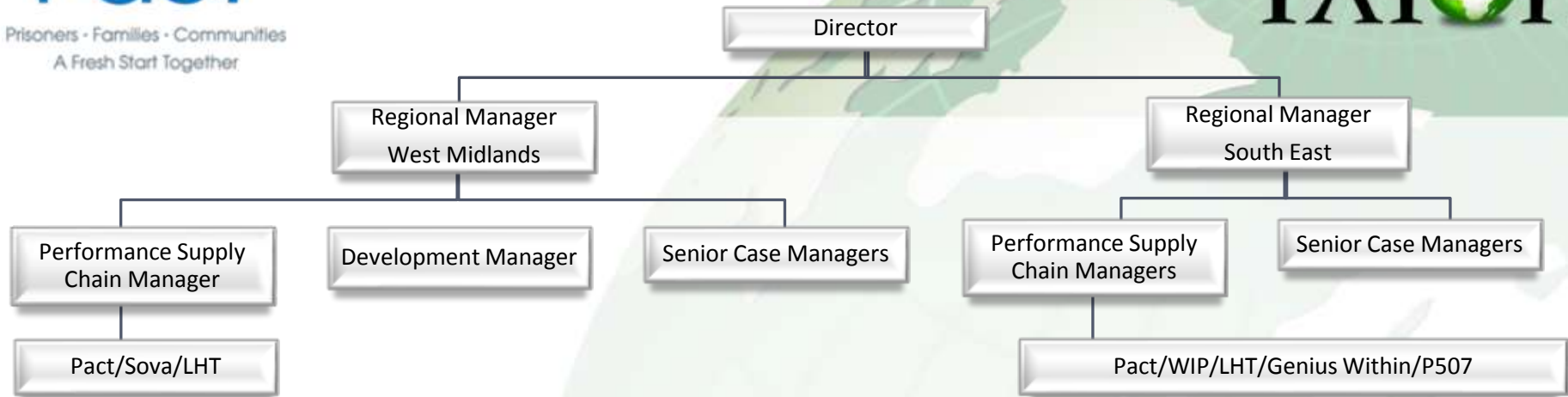
## Warwickshire and West Mercia CRC\*

- ▶ Telford
- ▶ Shrewsbury
- ▶ Redditch/ Kidderminster
- ▶ Hereford/ Worcester
- ▶ Nuneaton/ Rugby/ Leamington Spa

## Prisons

- ▶ Birmingham - Pact Case Manager
- ▶ Stoke Heath - Pact Case Manager
- ▶ Swinfen Hall - Pact Case Manager
- ▶ Brinsford - Pact Case Manager
- ▶ Drake Hall - Pact Case Manager
- ▶ Featherstone - Pact Case Manager
- ▶ Hewell - Pact Case Manager
  
- ▶ Werrington - Sova Youth Support Worker

## Ixion and Subcontractor Structures and Key contacts



### Ixion West Midlands

Regional Manager	Michael Olnier 07921 698519 Michael.Olnier@ixionholdings.com
Performance Supply Chain Manager	Natalee Brookes 07837331062 Natalee.Brookes@ixionholdings.com
Development Manager	Paul Crookendale 07985 911662 Paul.Crookendale@ixionholdings.com
Senior Case Manager	Clare Evans 07921698532 Clare.Evans@ixionholdings.com
Senior Case Manager	Neil Perkins 07808316212 Neil.Perkins@ixionholdings.com

### Ixion South East

Regional Manager	Nadine Sharples 07850774658 Nadine.Sharples@ixionholdings.com
Performance Supply Chain Manager	Abi Everett 07808316215 Abi.Everett@ixionholdings.com
Performance Supply Chain Manager	Chantel Turner 07507558469 Chantel.Turner@ixionholdings.com
Senior Case Manager	Darren Mason 07808316224 Darren.Mason@ixionholdings.com

### Pact

Director of Business Development and Performance	Emily Jolley 07712306939 Emily.Jolley@prisonadvice.org.uk
Contract Manager	Nicky Robertson-Peek 07702517485 Nicky.Robertson-Peek@prisonadvice.org.uk



Prisoners · Families · Communities  
A Fresh Start Together

The logo for Ixion, featuring the word "Ixion" in a black, serif font. The letter "o" is replaced by a small, realistic image of the Earth showing continents and oceans.

# Q&A Session



European Union  
European Social Fund  
Investing in jobs and skills